

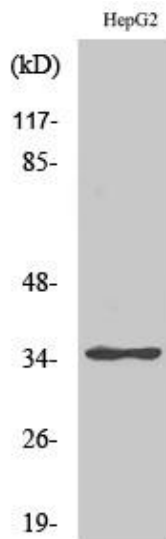


ZNF771 Polyclonal Antibody

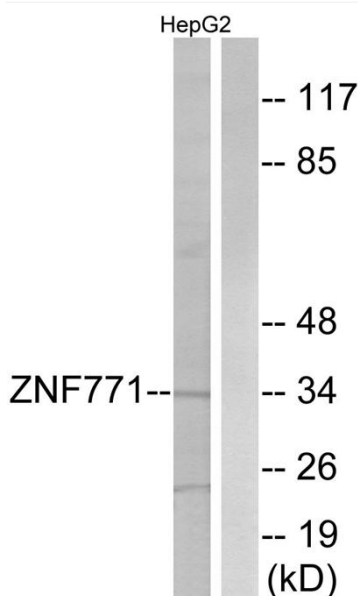
Catalog No	YP-Ab-02204
Isotype	IgG
Reactivity	Human;Mouse
Applications	WB;ELISA
Gene Name	ZNF771
Protein Name	Zinc finger protein 771
Immunogen	The antiserum was produced against synthesized peptide derived from human ZNF771. AA range:161-210
Specificity	ZNF771 Polyclonal Antibody detects endogenous levels of ZNF771 protein.
Formulation	Liquid in PBS containing 50% glycerol, 0.5% BSA and 0.02% sodium azide.
Source	Polyclonal, Rabbit,IgG
Purification	The antibody was affinity-purified from rabbit antiserum by affinity-chromatography using epitope-specific immunogen.
Dilution	Western Blot: 1/500 - 1/2000. ELISA: 1/20000. Not yet tested in other applications.
Concentration	1 mg/ml
Purity	≥90%
Storage Stability	-20°C/1 year
Synonyms	ZNF771; Zinc finger protein 771; Mesenchymal stem cell protein DSC43
Observed Band	34kD
Cell Pathway	Nucleus .
Tissue Specificity	Brain,Kidney,Muscle,
Function	function:May be involved in transcriptional regulation.,similarity:Belongs to the krueppel C2H2-type zinc-finger protein family.,similarity:Contains 8 C2H2-type zinc fingers.,
Background	function:May be involved in transcriptional regulation.,similarity:Belongs to the krueppel C2H2-type zinc-finger protein family.,similarity:Contains 8 C2H2-type zinc fingers.,
matters needing attention	Avoid repeated freezing and thawing!
Usage suggestions	This product can be used in immunological reaction related experiments. For more information, please consult technical personnel.



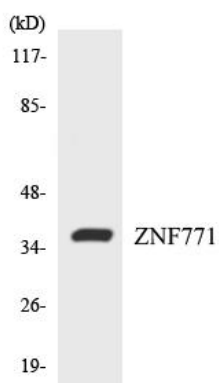
Products Images



Western Blot analysis of various cells using ZNF771 Polyclonal Antibody. Secondary antibody(catalog#:RS0002) was diluted at 1:20000 cells nucleus extracted by Minute TM Cytoplasmic and Nuclear Fractionation kit (SC-003,Inventbiotech,MN,USA).



Western blot analysis of lysates from HepG2 cells, using ZNF771 Antibody. The lane on the right is blocked with the synthesized peptide.



Western blot analysis of the lysates from HUVECcells using ZNF771 antibody.